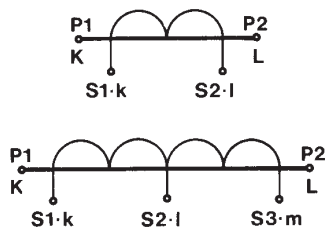


**TAT165...**  
 kg. 2,8 ÷ 4,0

**ANSCHLUSSBILD**  
**PRIMARY AND SECONDARY CONNECTIONS MARKING**



**SUPPLIED ACCESSORIES**

- built-in busbar fixing system
- clamping terminals with faston 6,3 x 0,8 mm for secondary and short-circuit

**Stromwandler**  
**BUSBAR PASSING C.T.**

**Technische Daten**

Material, selbstverlöschend  
 Thermoplastic  
 Nennfrequenz  
 Bemessungsspannung  
 Nennspannung  
 Prüfspannung  
 Isolations klasse  
 Schutzgrad  
 Überstrom, dauernd

**Technical data**

self extinguishing  
 thermoplastic material  
 operating frequency  
 insulation reference  
 voltage  
 test voltage  
 insulation  
 protection degree  
 continuous overcurrent

Thermischer (I th)

current (I th)

secondo/according to  
 UL94-V0  
 50±60 Hz

0,72 kV  
 3 kV x 1' 50 Hz  
 classe  
 IP 30  
 1,2 In

(I dyn)

current (I dyn)

2.5 x I th

Überstromfaktor  
 Betriebstemperatur  
 Lagertemperatur  
 Konformität

safety factor  
 operating temperature  
 storage temperature  
 manufactured according to

N ≤ 5  
 -25 +50 °C  
 -40 +80 °C  
 IEC/EN 60044-1,  
 VDE, BS, UTE

**MESSWANDLER, SEKUNDÄR 5 A - MEASURING C.T. SECONDARY 5 A**

PRIMÄRSTROM PRIMARY CURRENT	BÜRDE - BURDENS		TYP code
	cl 0,5	cl 1	
A	VA	VA	
1000	25	50	TAT1651K0X05
1200	30	60	TAT1651K2X05
1500	35	70	TAT1651K5X05
2000	40	80	TAT1652K0X05
2500	50	100	TAT1652K5X05
3000	70	120	TAT1653K0X05
4000	80	150	TAT1654K0X05
5000	100	180	TAT1655K0X05
6000	100	180	TAT1656K0X05
8000	100	180	TAT1658K0X05

**SCHUTZWANDLER, SEKUNDÄR 5 A - PROTECTION C.T. SECONDARY 5 A**

PRIMÄRSTROM PRIMARY CURRENT	BÜRDE - BURDENS			TYP code
	5 P 5	5 P 10	5 P 15	
A	VA	VA	VA	
1000	30	10	5	TAT1651K0K05
1200	35	12	6	TAT1651K2K05
1500	40	15	8	TAT1651K5K05
2000	60	20	10	TAT1652K0K05
2500	70	20	10	TAT1652K5K05
3000	80	25	12	TAT1653K0K05
4000	100	30	15	TAT1654K0K05
5000	40	15	5	TAT1655K0K05
6000	40	15	5	TAT1656K0K05
8000	40	15	5	TAT1658K0K05

All C.T.'s indicated in tables are available also with secondary 1A; the relevant burdens remain unchanged.

The price code for C.T.'s with secondary 1A has the last digit equal to 1.

**On request** are available versions with intermediate tapping on secondary winding, allowing the use of the C.T. with two different primary currents. Burdens of the relevant ratio are listed in the table.