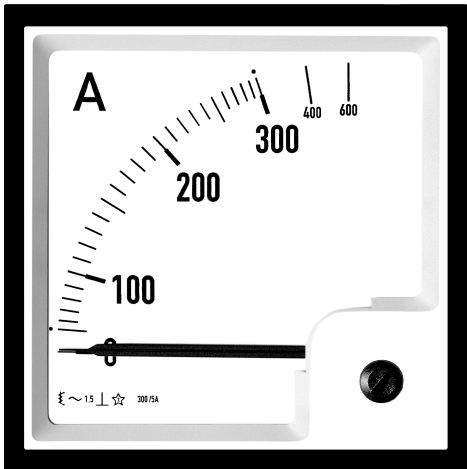


MOVING IRON CURRENT- /VOLTMETER EQ



- Measuring of AC current or AC voltage, true R.M.S.
- DIN sizes 48x48, 72x72, 96x96, 144x144mm
- Exchangeable scale
- class 1,5

Applikation

The EQ is a switchboard-mounting measuring device for measuring of AC current or AC voltage. The instruments are adjustet for frequency range 16...65 Hz.

Measuring range

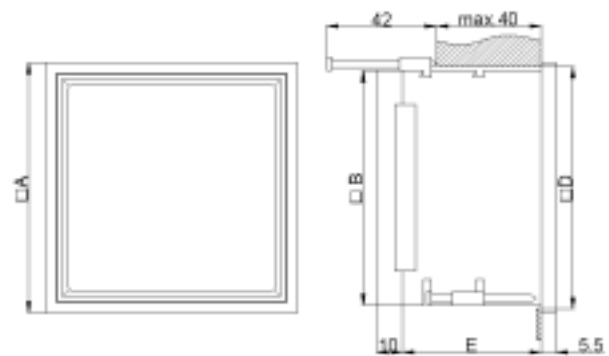
Typ	size(mm)	Measuring range - V/A ¹
Voltmeter		
EQ 48	48 x 48	40V...600V ³
EQ 72	72 x 72	40V...800V ³
EQ 96	96 x 96	40V...800V ³
EQ 144	144x 144	40V...800V ³
currentmeter		
PQ 48	48 x 48	1A...25A ²
PQ 72	72 x 72	1A...60A ²
PQ 96	96 x 96	1A...60A ²
PQ 144	144 x 144	1A...60A ²

- 1)Standard measuring ranges: 1-1,5-2,5-4-6- multiples of 10
- 2)Higher ranges: for use external current transformer, -/5A, -/1A
- 3)Higher ranges: for use exter. voltage transformer -/100V;-/110V

Technical specifications

Scala:	Exchangeable scale (Attention!!) disconect supply before changing scal)
Overload:	2-tims overload, 10-times for 5s
Accuracy:	classe 1,5 EN 60051 IEC 51
Burdens :	Voltmeter ca. 1,5..4VA Ammeter ca 0,5...1,2VA
Case:	Plastic, self-extinguishing (ULV94/V0)0

Dimension



TYP	EQ 48	EQ 72	EQ 96	EQ 144
A Size	48x48	72x72	96x96	144x144
B Innenmaß	42,8x42,8	66,5x66,5	90x90	136x136
D cut-out + Toleranz	45x45 0,3	68x68 0,4	92x92 0,4	138x138 0,5
E deep	53	53	53	53

Order specification

Voltmeter:	Typ, Size, Range (Voltage transformer) EQ 96, 0-500V /AC
Ammeter:	Typ, Size, Range, (current transformer) EQ 96, 0-100A, 100/5A